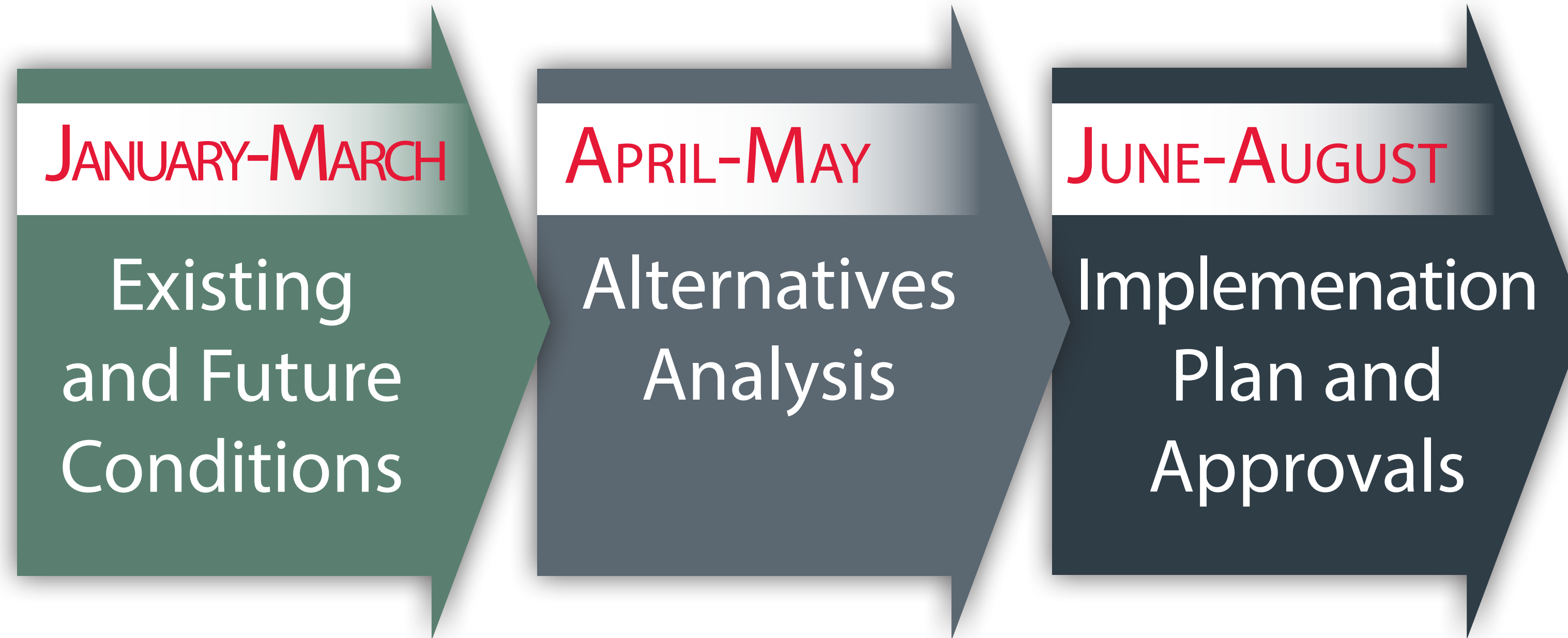


# US 2 AND US 81 SKEWED INTERSECTION STUDY

## STUDY PURPOSE

The US 2 and US 81 skewed intersection and the Mill Spur railroad create challenging traffic operations, making turning movements for trucks difficult and blocking driveways, and creating safety issues for vehicles, bicycles, and pedestrians.

## SCHEDULE

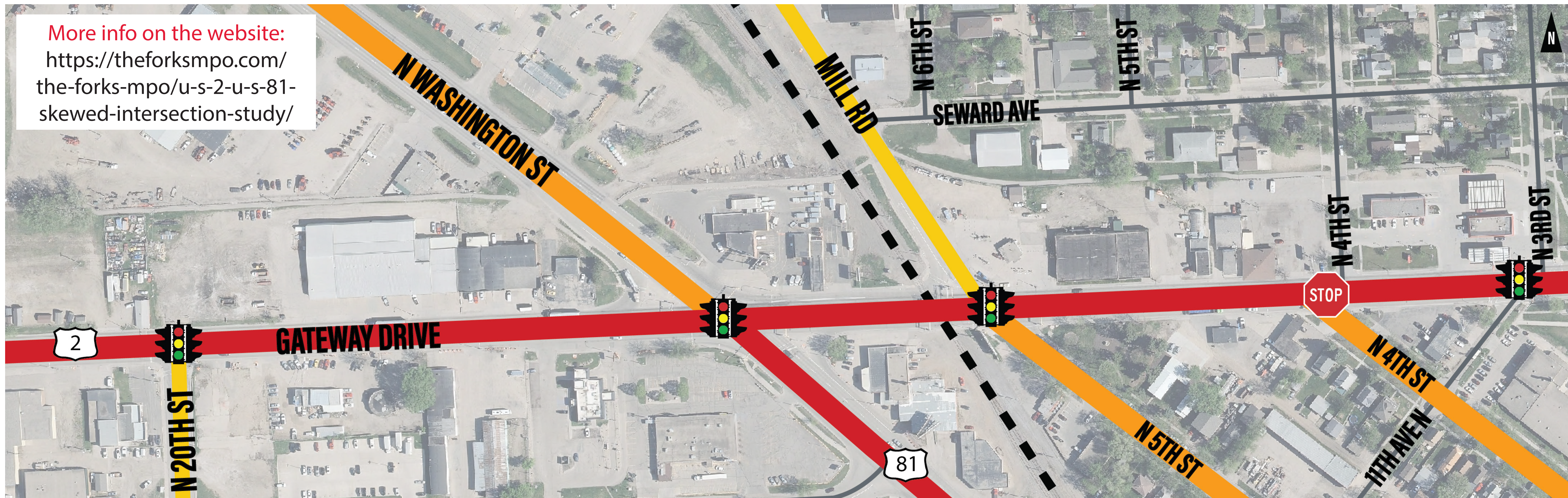


## PROJECT SPONSORS

Overcoming Barriers    Strengthening Connections  
M.P.O.    M.P.O.    M.P.O.  
Grand Forks - East Grand Forks  
Metropolitan Planning Organization  
Ensuring Opportunities    Planning One Community

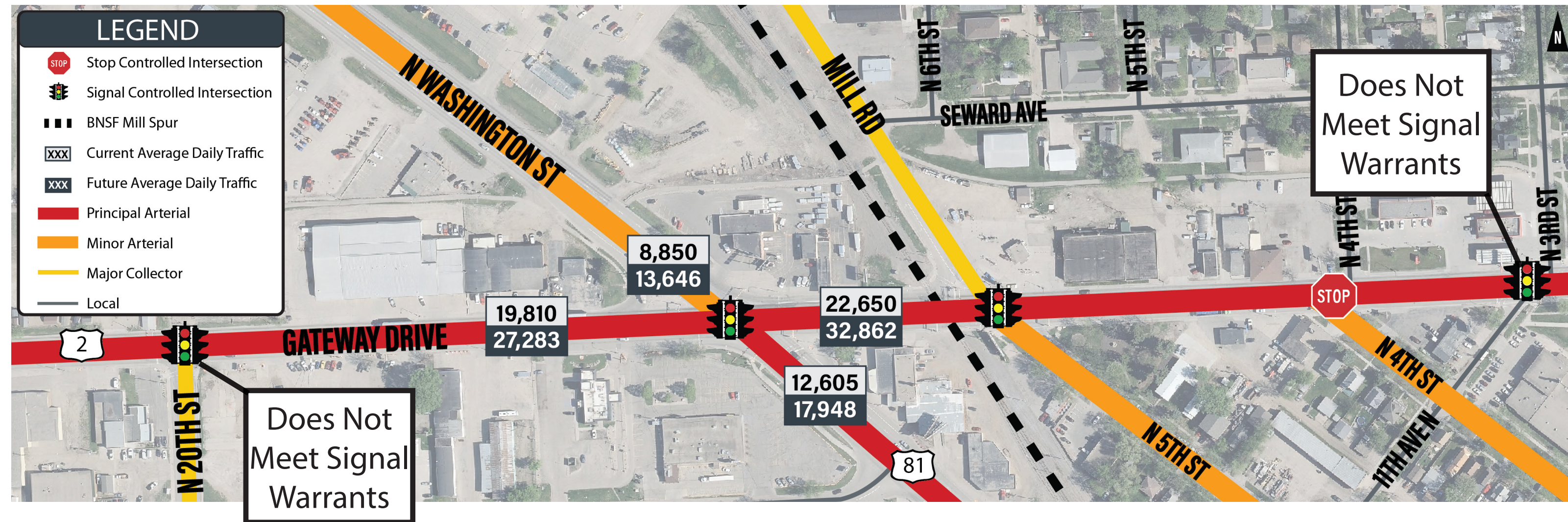


More info on the website:  
<https://theforksmmpo.com/the-forks-mmpo/u-s-2-u-s-81-skewed-intersection-study/>

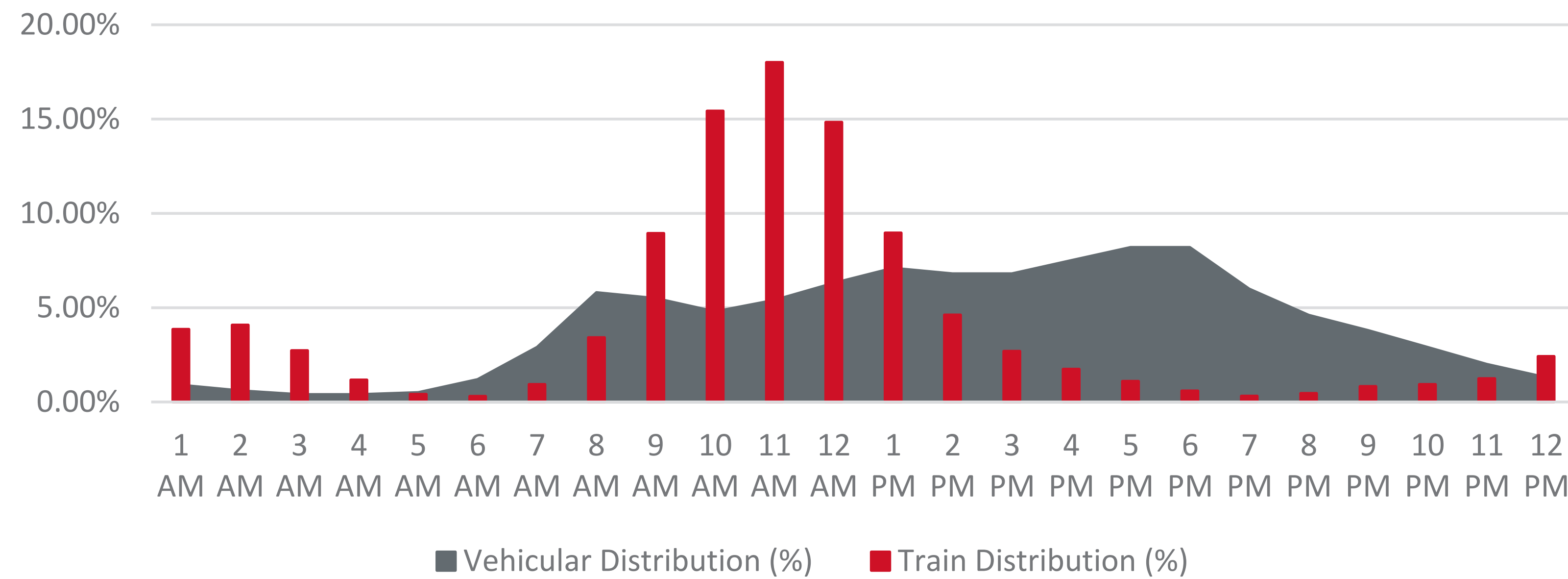




# TRAFFIC AND TRAINS



## Train and Traffic Distribution



## Train Blockages

### Unit Trains Planned to State Mill

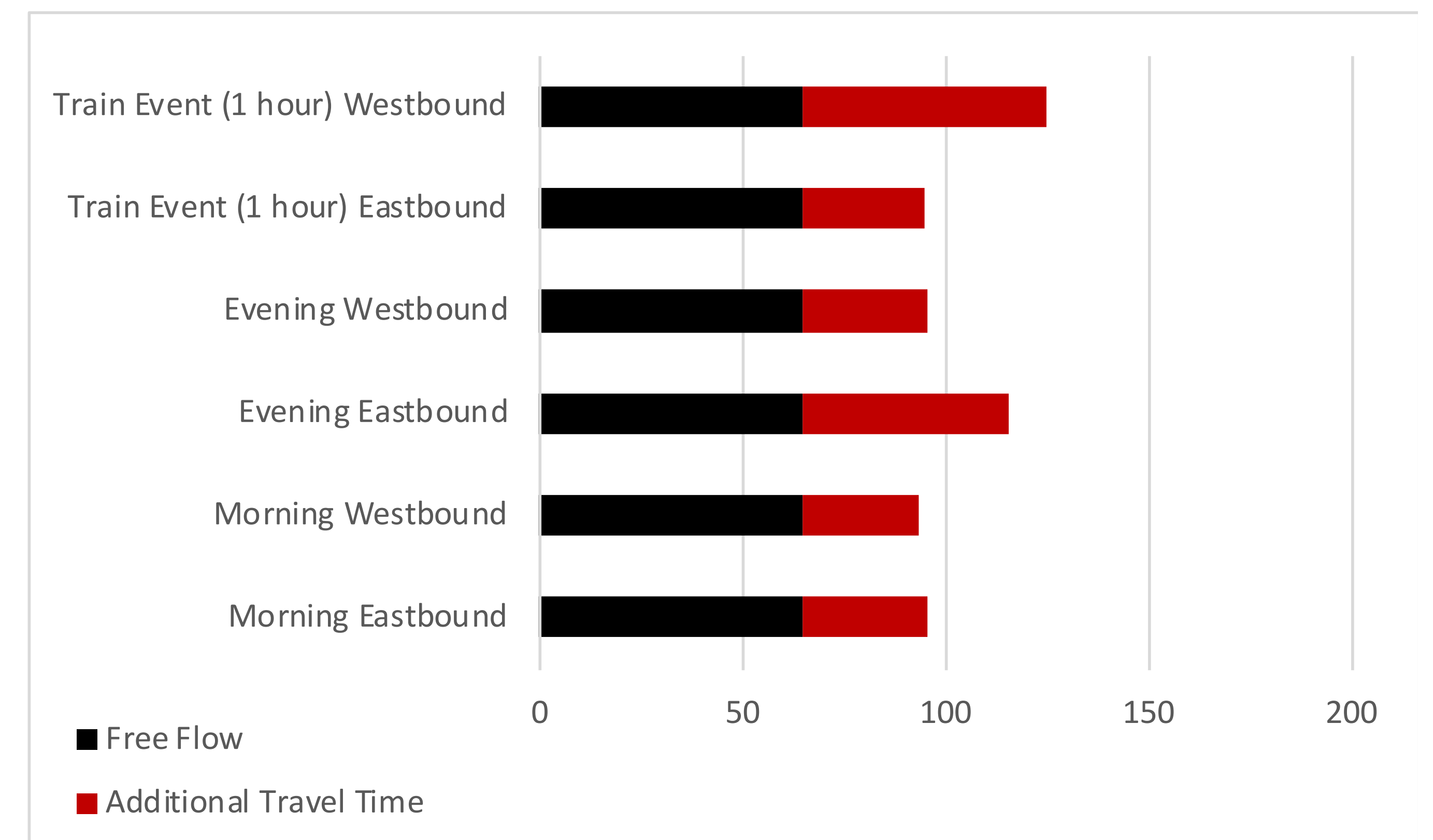
- 4 times longer than normal trains
- 2 times each month
- 10 to 17 minutes of delay at Gateway Drive/US 2 per train

### Train Delay Stats

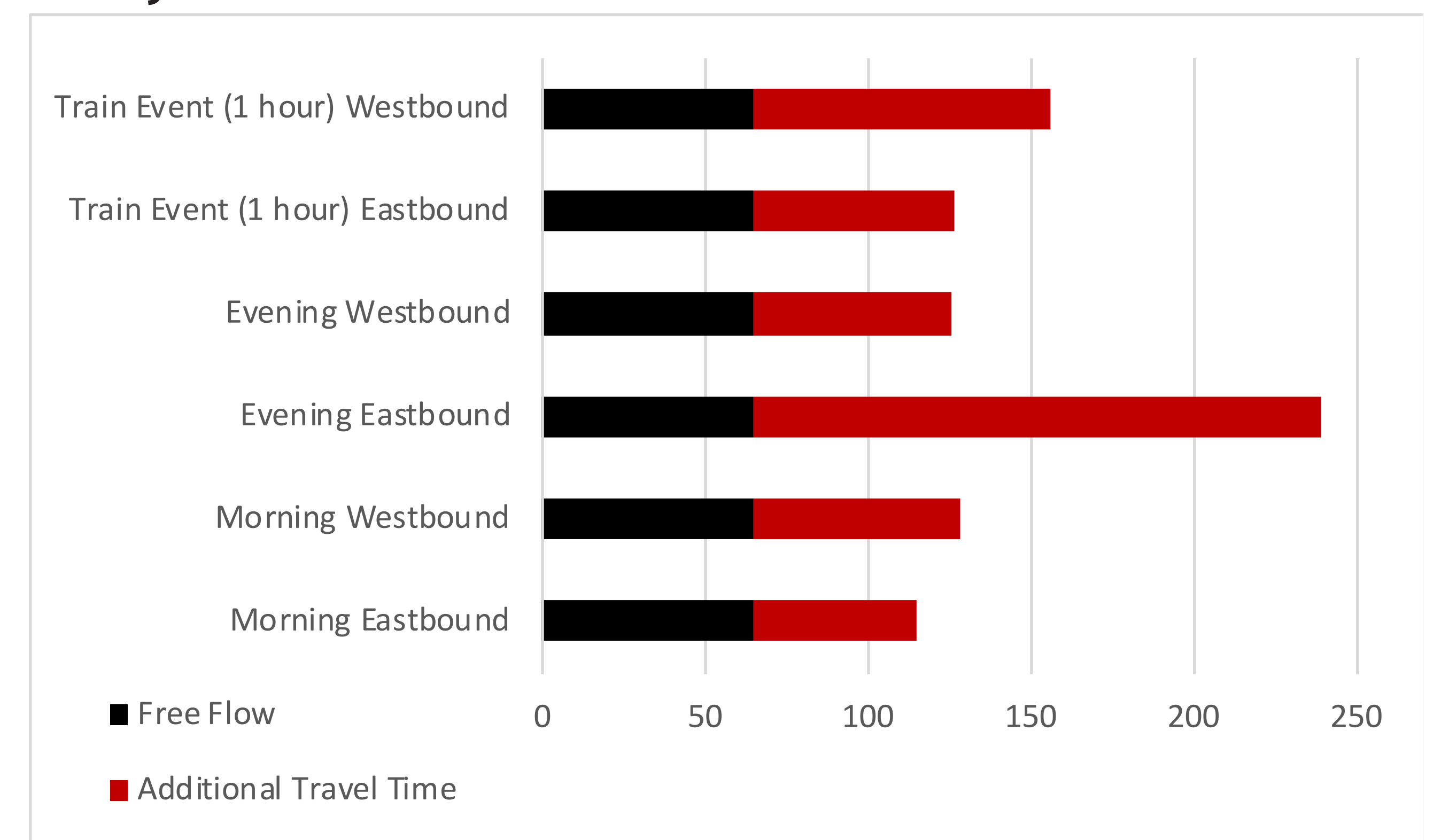
- *Minimum Delay* - 0:21 minutes
- *Average Delay* - 2:31 minutes
- *Maximum Delay* - 14:14 minutes



## Current Travel Times



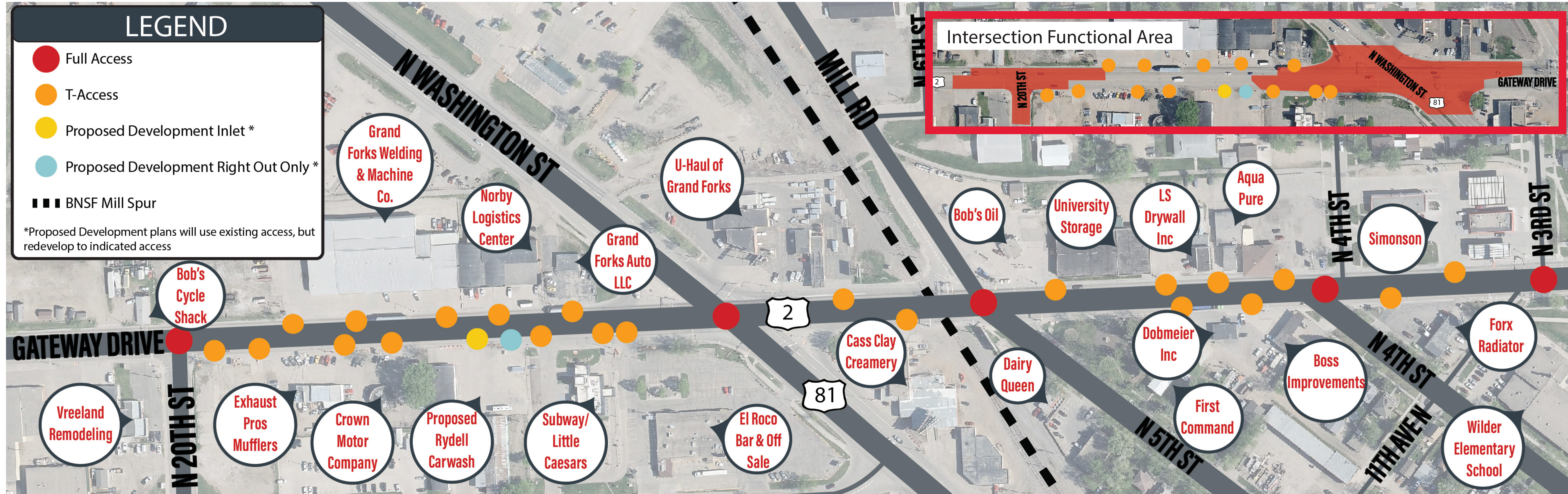
## 2045 Projected Travel Times



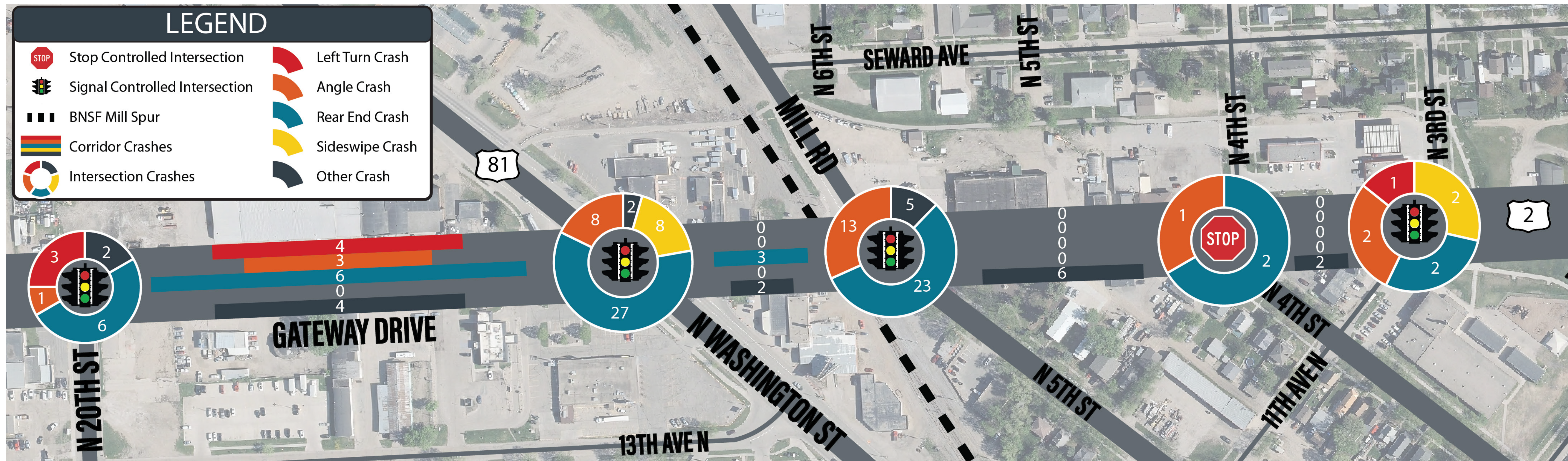


# SAFETY

Current Accesses



Current Crash Locations





# MULTIMODAL CONDITIONS AND ENVIRONMENTAL CONDITIONS

