

Downtown Parking Study

Working Session – November 1, 2006

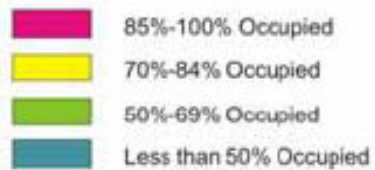
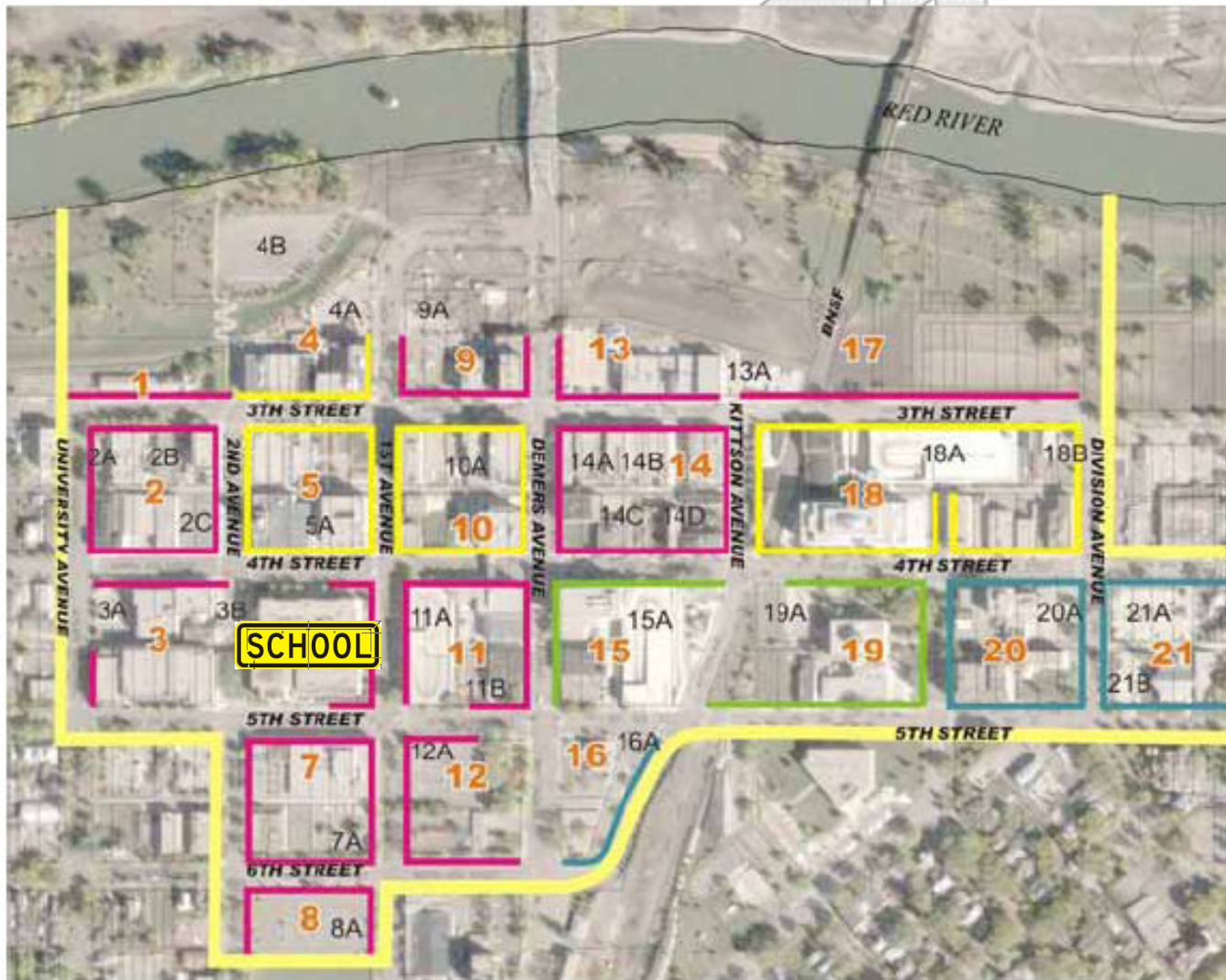
Public Input

- Steering Committee Meetings
 - Four meetings
- Open Houses
 - First - beginning of June
 - Second - end of July
- Stakeholder Interviews

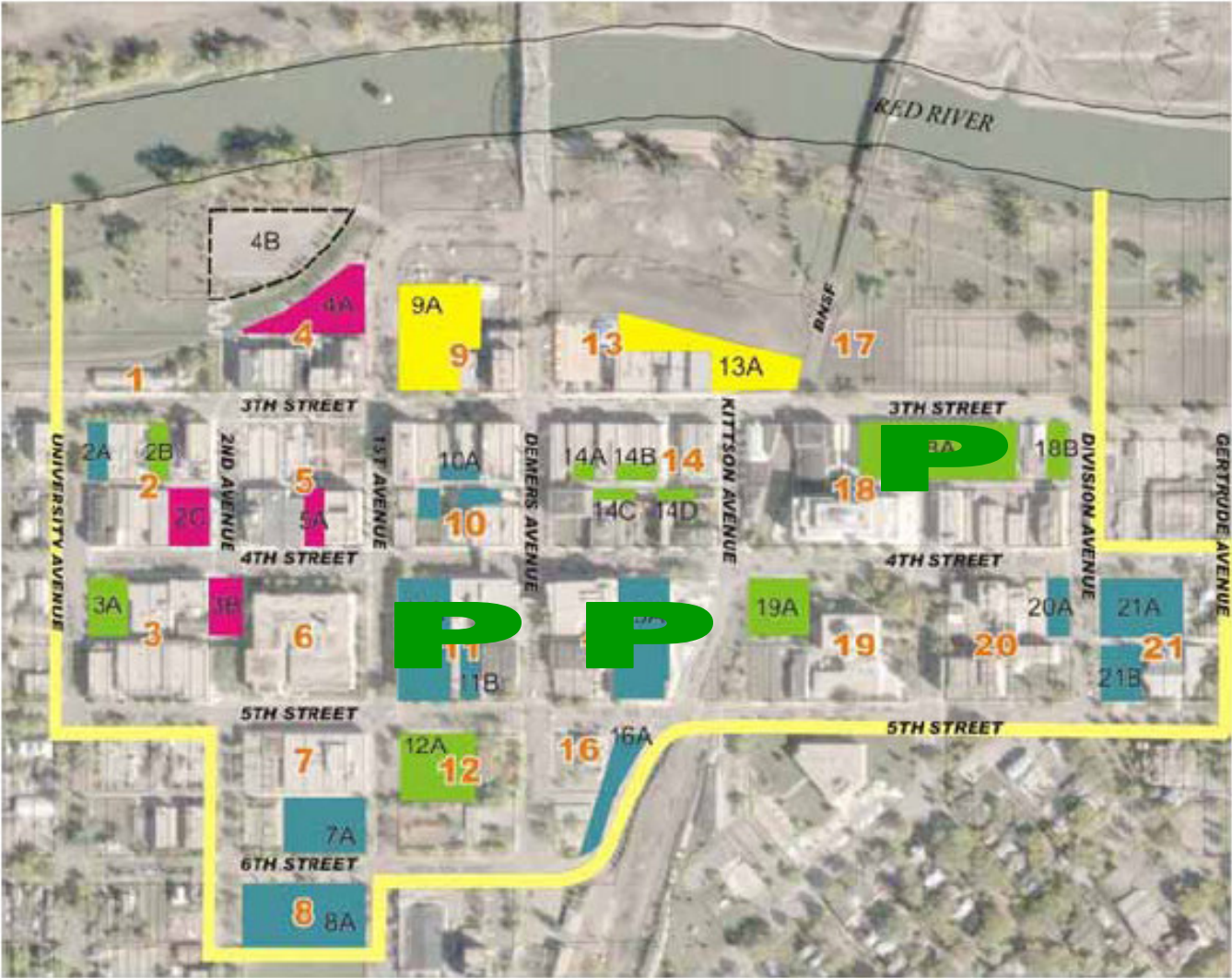
Total Parking Available in the Downtown

Block #	On-Street Spaces	Surface Lots Spaces	Ramp Spaces	Total
1	14	0	0	14
2	41	90	0	131
3	12	51	0	63
4	20	28	0	48
5	47	10	0	57
6	21	0	0	21
7	40	62	0	102
8	21	130	0	151
9	31	70	0	101
10	52	45	0	97
11	34	40	403	477
12	24	81	0	105
13	17	53	0	70
14	58	25	0	83
15	24	0	357	381
16	13	37	0	50
17	30	0	0	30
18	82	26	336	444
19	32	60	0	92
20	49	35	0	84
21	44	102	0	146
Total	706	945	1096	2747

On-Street Daytime Parking Utilization

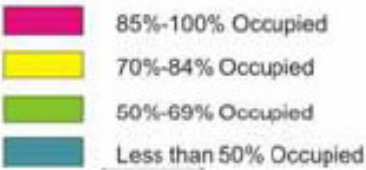
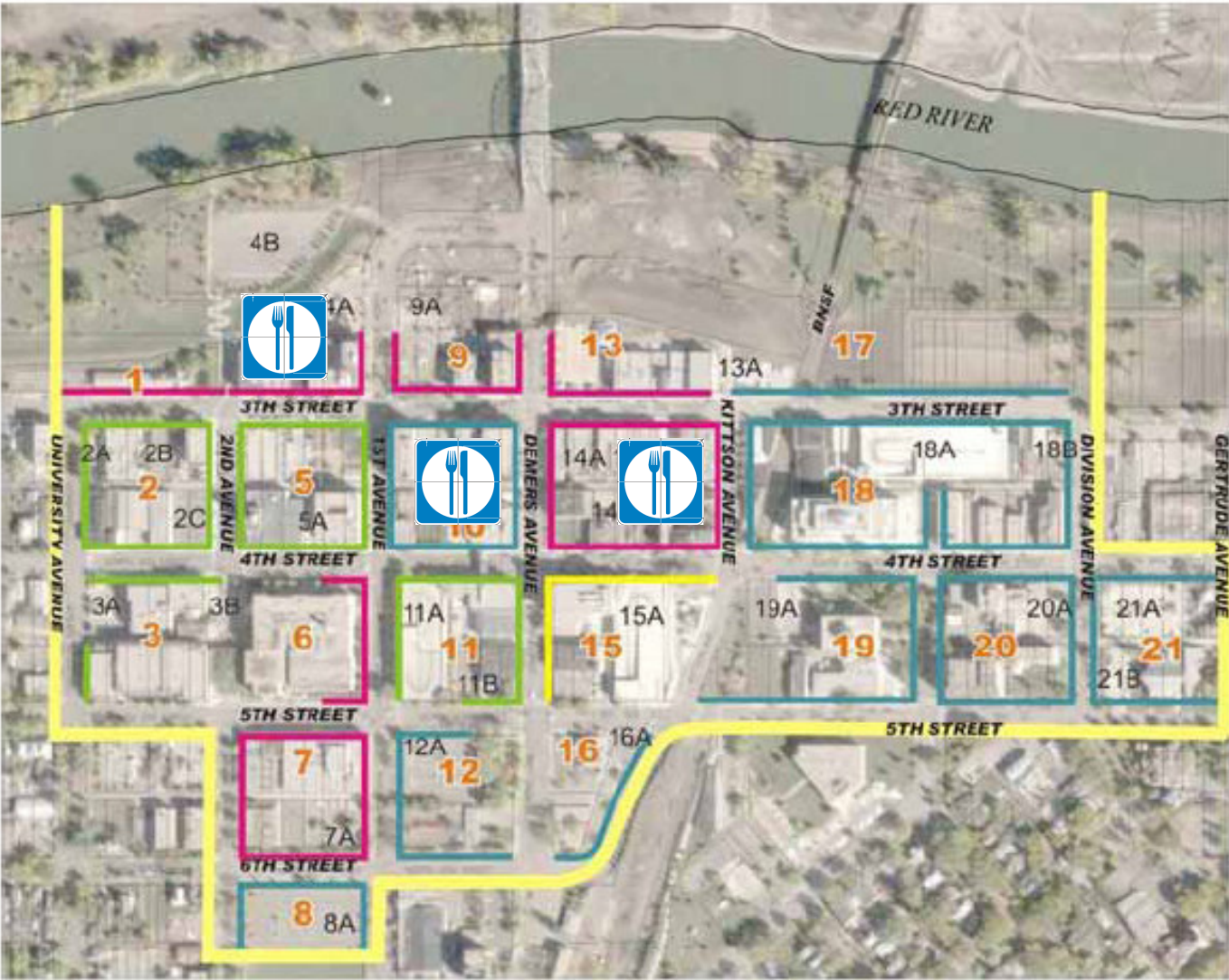


Off-Street Daytime Parking Utilization

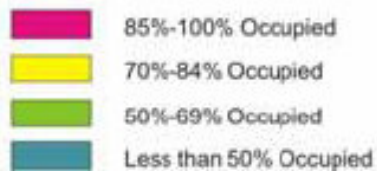
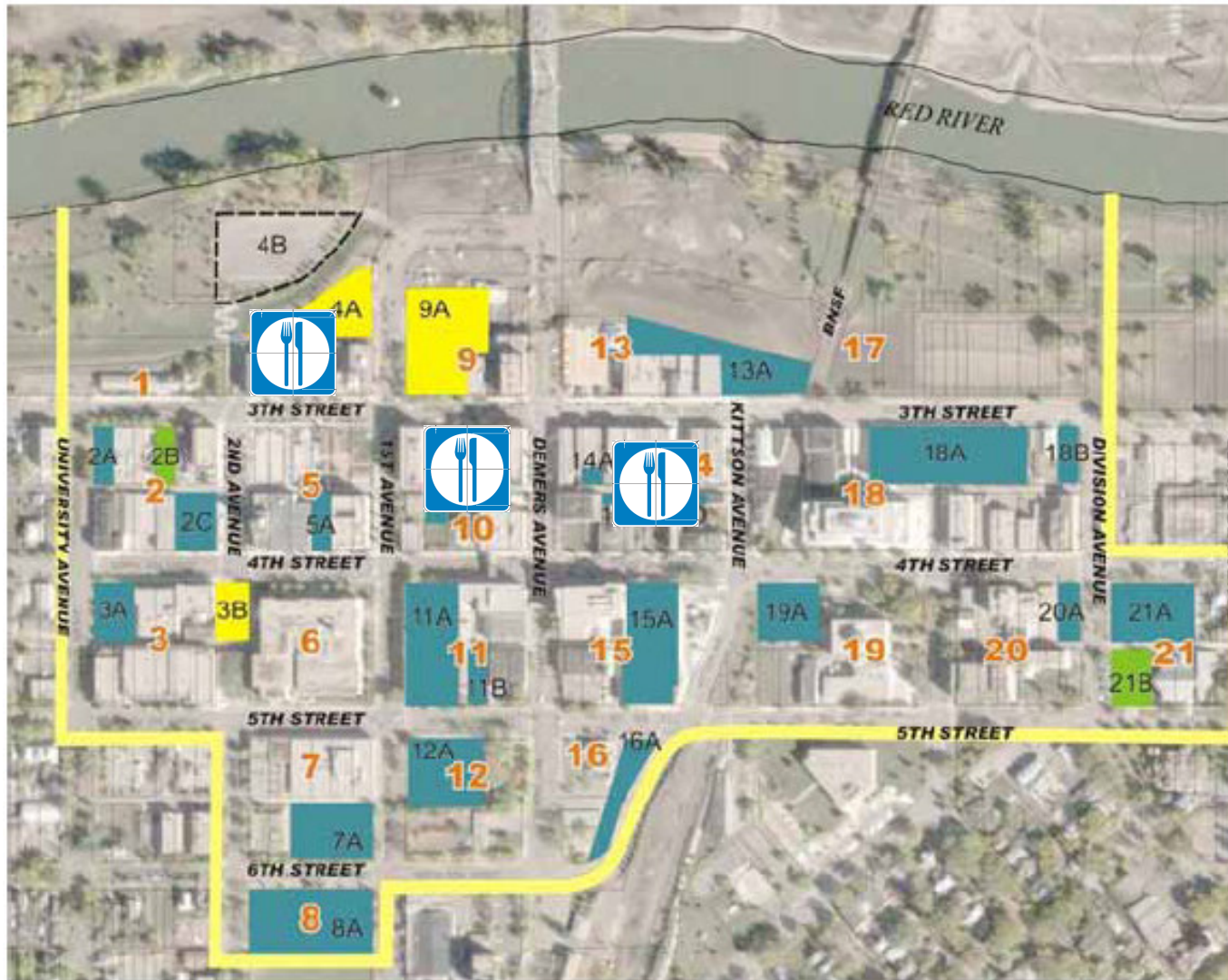


- 85%-100% Occupied
- 70%-84% Occupied
- 50%-69% Occupied
- Less than 50% Occupied

On-Street Evening Parking Utilization



Off-Street Evening Parking Utilization





Angle Parking Option





WORK NOT

Drainage Solution



Angle Parking Option



Proposed Pilot Project Locations



4

KITTON AVENUE

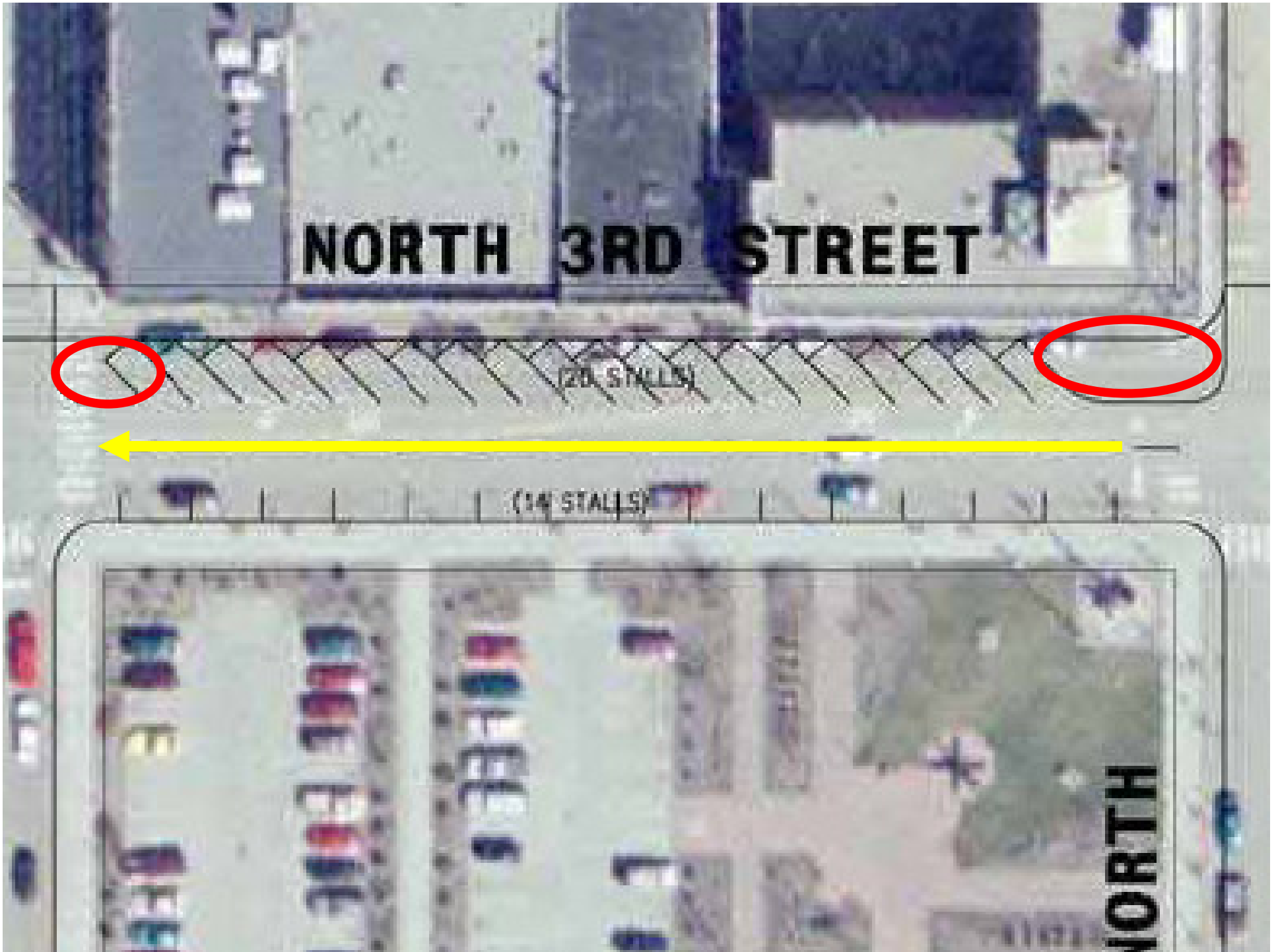
4TH STREET

(8 STALLS)

(8 STALLS)

(8 STALLS)

(8 STALLS)



NORTH 3RD STREET

(20 STALLS)

(14 STALLS)

NORTH

Total Parking Spots Added



In Total 52 Spaces Added

Disadvantages of Angle Parking

- Removal of continuous left turn lane
 - Also effects delivery trucks
- Street Snow Removal will be more difficult
- Sidewalk Snow Removal will be effected
- Cost of Curbing if Desired

Where Else Should Angle Parking Be Considered?



Central Parking Ramp – Cost Estimates

1)	Expansion Joints need to be repaired/replaced	\$30,000
2)	Concrete decks surfaces are deteriorating	\$150,000
3)	Paint steel beams & columns (Future)	\$15,000
4)	Lower level drainage is poor	\$25,000
5)	Paint striping	<u>\$4,000</u>
	TOTAL	\$29,000

Corporate Parking Ramp – Cost Estimates

1) Stairway steel framing is rusting	\$8,000
2) Missing drain covers	\$1,000
3) Drain on top ramp is too high	\$10,000
4) Broken drain pipe	\$500
5) West entry drain is too high	\$2,500
6) Ponding along center wall	<u>\$25,000</u>
Total	\$47,000

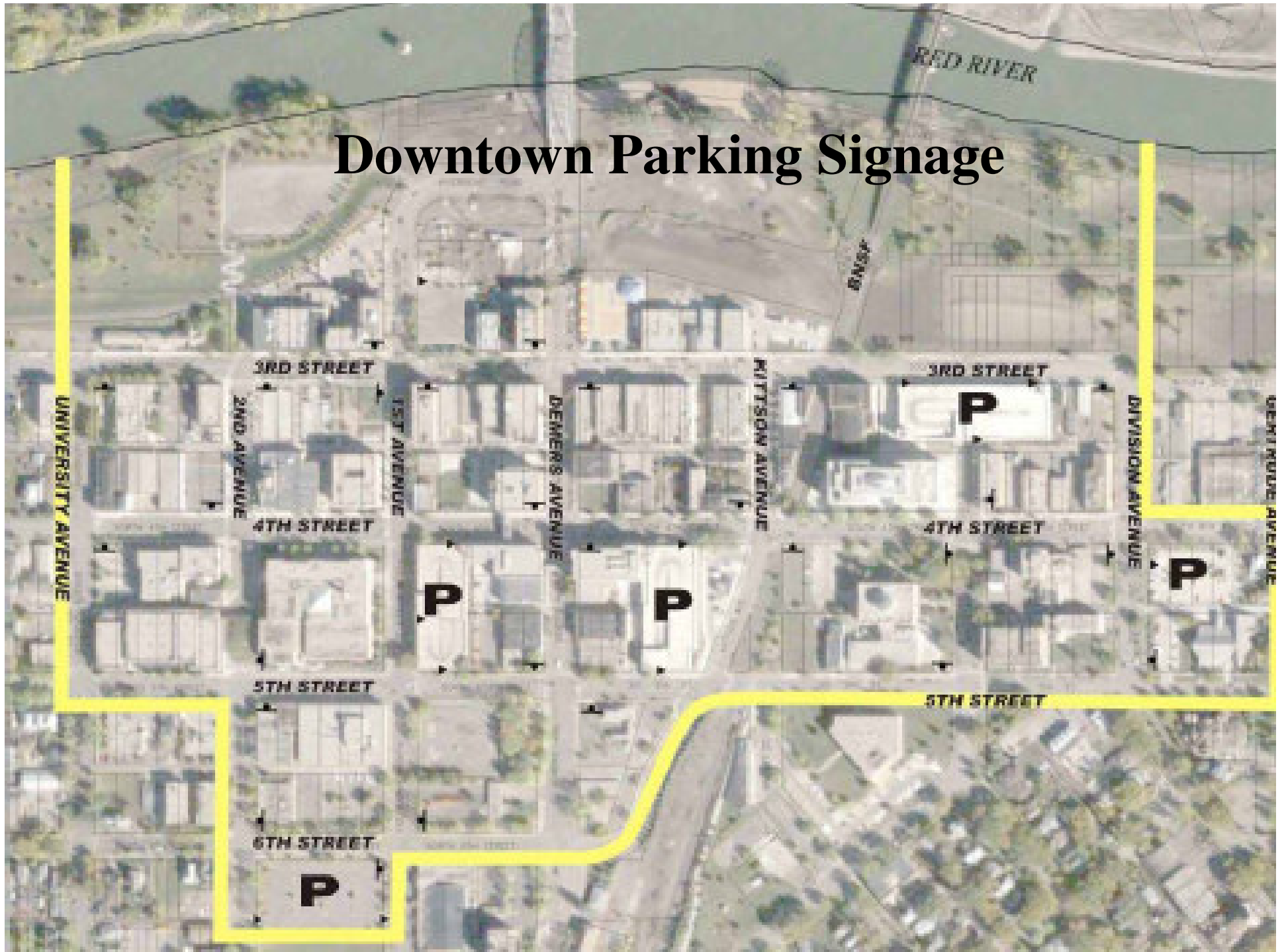
County Parking Ramp – Cost Estimates

1) Expansion joints leaking	\$15,000
2) Drains too high (beam camber)	<u>\$25,000</u>
Total	\$40,000

Security Items

- Cameras for Central and Corporate Parking Ramps - \$100,000 per ramp
- Emergency buttons at stairs and elevators for each ramp - \$25,000 per ramp
- Ensure lighting is operational

Downtown Parking Signage



Recommendations

- 1) Designate the Office of Urban Development to manage the municipal parking system; to enforce parking regulations for all public parking spaces, including those on-street, within the municipal parking system's boundaries; and to implement, with Council approval the Study's recommendations.
- 2) Authorize the Office of Urban Development to undertake, subject to available budget, security and maintenance improvements in the Corporate and Central ramps.
- 3) Apply all revenues generated through management of the municipal parking system to be used to operate, maintain, upgrade the system and to offset, where prudent, parking assessments.
- 4) Implement Angle Parking on test sites on Kittson, 2nd Ave N with short time parking considerations and N. 3rd St (1st to 2nd Ave N, once work zone is vacated) starting in the spring of 2007.
- 5) Install Parking Directional Signage and prepare a downtown parking map and survey business about 1 hour parking.
- 6) Meet bimonthly with CBD to discuss parking situations.